



Cruisin' 57 Parts List

<u>Part Number</u>	<u>Description</u>	<u>Picture of Part (If Available)</u>
C57-01-0021	Game Box - A40	
C57-01-0025	Main I/O Board	
C57-01-0037	17.3 Inch Monitor	
C57-01-0042	Monitor Cable	
C57-01-0055	Constant Speed Motor - 110 V	
C57-01-0055-B	Constant Speed Motor - 220 V	
C57-01-0099	Power Supply - 12 Volt (LRS-200-12)	

C57-01-0183 Converter Board



C57-01-0296 Monitor Driver Board



C57-01-0726 Steering Wheel



C57-01-0803 Gas Pedal



C57-01-0917 Vibration Motor Control Box



C57-01-1003 Speaker



C57-02-0446 Headlight LED Board - White



C57-02-0472 Rear Tail Light Bottom



C57-02-0832

Rear Tail Light LED -
Bottom



C57-02-1180

Headlamp Assembly



C57-04-0006

Speaker Cover



C57-04-0031

Monitor Glass - 17
Inches



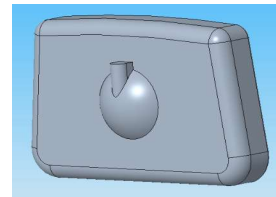
C57-04-0033

Monitor Glass - 17.3
Inches



C57-04-0251

Montior Housing
(Rearview Mirror)



C57-04-0318







Windshield Mounting
Frame



C57-04-0377

Rear Tail Light Cover -
Top



C57-04-0396	Montior Mounting Hardware (for 1 corner)	
C57-04-0421	Windshield Acrylic	
C57-04-0449	Rear Tail Light Cover - Bottom Left (triangle)	
C57-04-0450	Rear Tail Light Cover - Bottom Right (triangle)	
C57-04-0547	Headlamp Cover	
C57-04-0959	Front Turn Signal Assembly - Red	
C57-04-1181	Sideview Mirror (Left/Right)	
C57-04-1317	Dashboard Plexi - Fuel Guage	

C57-04-1318

Dashboard Plexi -
RPM Guage



C57-04-1319

Dashboard Plexi -
Spedometer

